

## Company Outline

ORTHOMEDICO Inc.,

2F Sumitomo Fudosan Korakuen Bldg.,  
1-4-1 Koishikawa, Bunkyo-ku, Tokyo, 112-0002, Japan  
Phone: +81-3-3818-0610  
Fax: +81-3-3818-0617  
E-mail: info@orthomedico.jp  
Web site: www.orthomedico.jp

### Company's Policy

ORTHOMEDICO Inc. evaluates efficacy and safety of your products and provides "low-price and high-quality clinical trials" with our best effort. Recently, it has increased that food companies offer products with evidence to consumers such as foods, supplements, cosmetics, and medical items. In addition, consumers are interested in safety and efficacy products more, and the government has started "Foods with Function Claims" since 2015. The obtaining evidence is important.

We, ORTHOMEDICO, offer our services from establishing protocol, recruiting subjects, data analysis and presentation, and publication of the results by our specialists, who have accumulated experiences in collaborative research with universities.

ORTHOMEDICO Inc. hopes to be the company contributing on improvement of the QOL for all of the people by conducting clinical trials.

### Company's outline

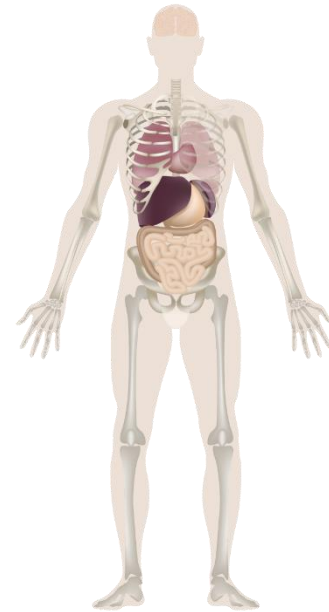
- △ *Company Name* ORTHOMEDICO Inc.,
- △ *Address* 2F Sumitomo Fudosan Korakuen Bldg.,  
1-4-1 Koishikawa, Bunkyo-ku, Tokyo, 112-0002, Japan
- △ *Establishment* June 2005
- △ *Capital* JPY 75,000,000-
- △ *Main Operation* Conducting clinical trials, publication, and presentation

### Advisers

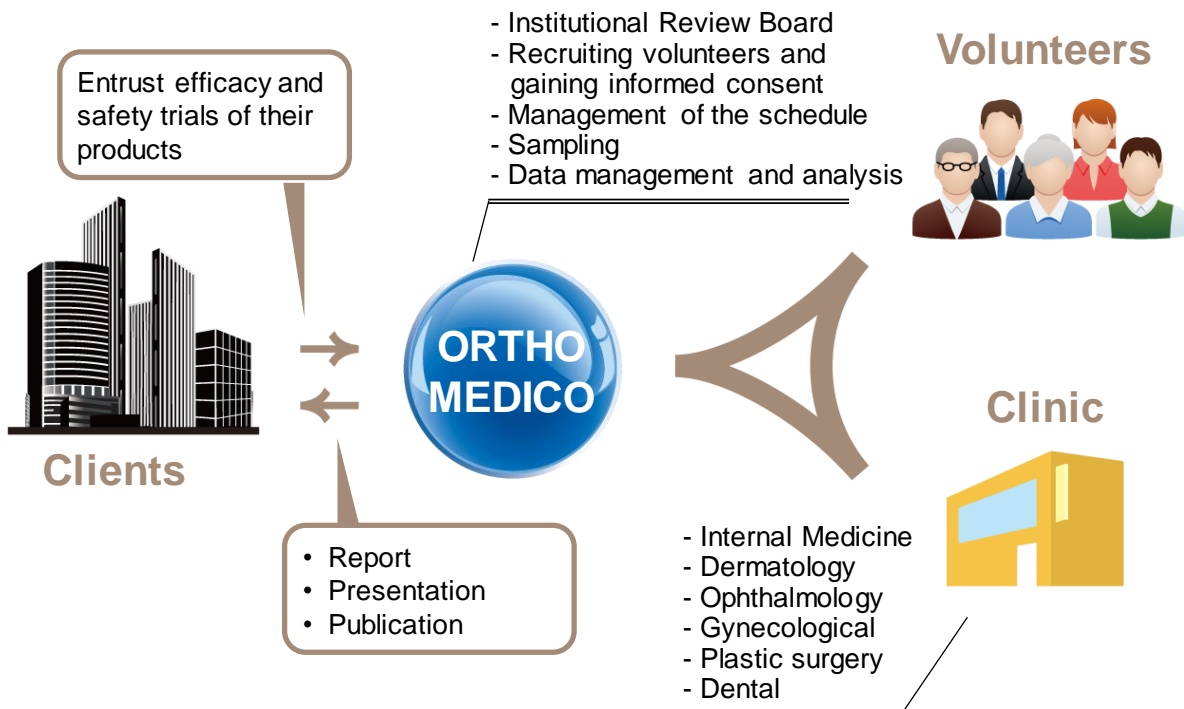
- △ *Physician* Dr. Sunao KUBOTA Dr. Tsuyoshi Takara  
Dr. Yoshihisa ABO Dr. Tatsuya Izumi
- △ *Dental Medicine* Dr. Koichi MATSUO Dr. Takuya HAMAJIMA

### Acquiring the evidence in humans

Type of trial	<ul style="list-style-type: none"> <li>• Safety (Long-term / Over-dose)</li> <li>• Efficacy</li> <li>• Dose-finding</li> <li>• Bio-equivalence</li> </ul>
Blinding	<ul style="list-style-type: none"> <li>• Open-label</li> <li>• Single-blind</li> <li>• Double-blind</li> </ul>
Group	<ul style="list-style-type: none"> <li>• Single-group</li> <li>• Multiple-group</li> </ul>
Design	<ul style="list-style-type: none"> <li>• Before-after trial</li> <li>• Randomized Controlled Trial (RCT)</li> <li>• Cross-over trial</li> </ul>



### ORTHOMEDICO's business model

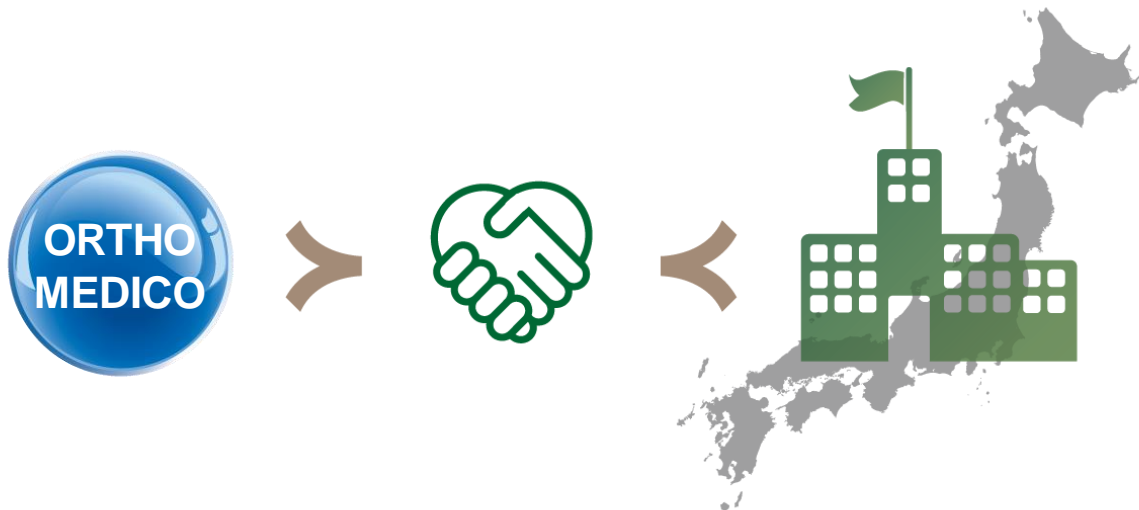


We, **ORTHOMEDICO**, support to obtain evidence for clients as follows: 1) protocol establishments, 2) recruiting volunteers, 3) scheduling adjustment, 4) data management, 5) analysis and, 6) presentation and publication.

### Support for Industry-academia-government collaborative research

We, [ORTHOMEDICO](#) Inc., have collaborated with universities and research institutes in Japan.

We believe that acquiring accurate results collaborating with excellent specialists at the universities could be expanded in other fields and contribute to the society.



- Tokyo Medical and Dental University
- University of Tsukuba
- Waseda University
- National Institute of Advanced Industrial Science and Technology (AIST)

### Paper

- △ Effects of Sanchi ginseng Extract on the Sexual Function in Japanese Men —A Randomized, Double-blind, Placebo-controlled, Parallel-group Trial—. *Jpn Pharmacol Ther* 2018; 46(4): 561–580. (UMIN000025127)
- △ Safety Evaluation of Excessive Intake of Crocetin in Healthy Adult Volunteers—A Randomized, Double-blind, Placebo-controlled, Parallel-group Comparison Trial— [Article in Japanese]. *Jpn Pharmacol Ther* 2018; 46(3): 393-401. (UMIN000027038)
- △ Effects of a Beverage Containing Powder of *Antrodia cinnamomea* mycelium and Fermented Grain Extracts on Improving Alcohol Metabolism —A Randomized, Double-blinded, Placebo-controlled, Crossover Trial— [Article in Japanese]. *Jpn Pharmacol Ther* 2018; 46(3): 363-373. (UMIN000026356)
- △ Effect of an *Apocynum venetum* Leaf Extract (VENETRON®) on Sleep Quality and Psychological Stress Improvement -A Randomized. Double-blind. Placebo-controlled Crossover Study-. *Jpn Pharmacol Ther.* 2018;46(1):117-125. (UMIN000026341)
- △ Seaberry extract with ursolic acid improves anxiety about urinary dysfunction in Japanese adults. *FFHD* 2017; 7(12): 901-922. (UMIN000023486)

- △ Effects of a Drink Containing *Lactobacillus casei* on Improving the Intestinal Environment in People with Constipation —A Randomized, Double-blind, Placebo-controlled, Parallel-group Trial— [Article in Japanese]. *Jpn Pharmacol Ther* 2017; 45(12): 1947-1962. (UMIN000024673)
- △ Anti-aging Effects of HGH Crystal MD®, a Supplement Containing Amino Acids, in Healthy Women —An Open-label Trial— [Article in Japanese]. *Jpn Pharmacol Ther* 2017; 45(10): 1697-1708. (UMIN000025400)
- △ Effect of a Bilberry Extract (BILBERON®) -containing Diet on the Improvement of Eye Fatigue-related Symptoms (II) -A Randomized. Double-blind. Placebo-controlled Parallel-group Comparison Study-. *Jpn Pharmacol Ther.* 2017;45(9):1523-1534. (UMIN000021612)
- △ The Cytological Effects of Paste of Fermented Plant Extract AO via Mitochondria and Antioxidant Function [Article in Japanese]. *Jpn Pharmacol Ther* 2017; 45(7): 1141-1152.
- △ Effects of Paste of Fermented Plant Extract AO on Antioxidant Capacity and Skin Condition in Healthy Japanese Women —An Open Trial— [Article in Japanese]. *Jpn Pharmacol Ther* 2017; 45(7): 1153-1164. (UMIN000022761)
- △ Effects of Ingestion of Krill Oil on Quality of Life Related to Mild Knee Pain —A Randomized Double-blind Placebo-controlled Trial— [Article in Japanese]. *Jpn Pharmacol Ther* 2017; 45(6): 999-1026. (UMIN000022084)
- △ Effects of Crocetin on the Pupillary Response during Accommodation Induced by Visual Display Terminal Work: A Randomized, Double-blind, Placebo-controlled, Crossover Trial [Article in Japanese]. *Japanese Journal of Complementary and Alternative Medicine* 2017; 14(1): 9-16. (UMIN000019150)
- △ Effects of Aronia Berry Intake on Eye Fatigue —A Randomized Double-blind Placebo-controlled Trial— [Article in Japanese]. *Jpn Pharmacol Ther* 2017; 45(2): 211-220. (UMIN000020684)
- △ Effects of  $\beta$ -cryptoxanthin-containing Paprika Oleoresin on the Quality of Life of Healthy Adult Volunteers with Mild Knee Pain —A Randomized, Double-blind, Placebo-controlled, Parallel-group Comparison Trial— [Article in Japanese]. *Jpn Pharmacol Ther* 2017; 45(2): 223-233. (UMIN000016530)
- △ Current status surveys on non-users of dietary supplements' needs. *New Food Industry.* 2017;59(1):46-54. (UMIN000024982)
- △ The Improvement Effect of Bilberry Extract (BILBERON®) -Containing Diet on Eye Fatigue and Eye Dryness -A Randomized, Double-blind, Placebo-controlled Parallel-group Comparison Study-. *Jpn Pharmacol Ther.* 2016;44(12):1773-1783. (UMIN000021611)
- △ Safety Evaluation of the Safety of Excessive Ingestion of Garlic-egg Yolk-containing Supplements in Humans —An Open-label Trial— [Article in Japanese]. *Jpn Pharmacol Ther* 2016; 44(12): 1795-1819. (UMIN000023668)

- △ Efficacy and Safety of Heat-killed *Enterococcus faecalis* strain EC-12 in Healthy Japanese Adult Women —A Randomized, Placebo Controlled, Double-blind Paralleled Study— [Article in Japanese]. *Jpn Pharmacol Ther* 2016; 44(12): 1821-1830.
- △ The Effects of Administration of Garlic-egg Yolk-containing Supplements on Serum Lipid Level in Humans —A Randomized, Double-blind, Placebo-controlled Trial— [Article in Japanese]. *Jpn Pharmacol Ther* 2016; 44(11): 1645-1653. (UMIN000023667)
- △ Effects of Ingestion of Rice Balls Containing Eel Collagen Peptide on Human Skin Conditions —A Randomized, Double-blind, Parallel-group, Placebo-controlled, Trial— [Article in Japanese]. *Jpn Pharmacol Ther* 2016; 44(10): 1483-1494.
- △ Safety Evaluation of Excessive Lactobionic Acid Intake in Humans—An Open-label Trial— [Article in Japanese]. *Jpn Pharmacol Ther* 2016; 44(6): 895-907.
- △ Effects of Freeze-dried Bee Larvae Ingestion on Human Atopic Dermatitis—An Open-label Case Study— [Article in Japanese]. *J. New Rem. & Clin.* 2016; 65(9): 1145-1159.
- △ Effects of Glucosamine HCl Ingestion on Human Knee Pain and Knee-related QOL—A Randomized, Double-blind, Placebo-controlled, Parallel Group Trial— [Article in Japanese]. *J. New Rem. & Clin.* 2016; 65(7): 946-956
- △ Immunomodulation in Middle-Aged Humans Via the Ingestion of Physta® Standardized Root Water Extract of *Eurycoma longifolia* Jack -A Randomized, Double-Blind, Placebo-Controlled, Parallel Study. *Phytother Res.* 2016; 30: 627-635. (UMIN000011753)
- △ Efficacy and Safety of "Powder of the Fermented Extract from Plants EX" Consumption in Improving Gut Environment in Healthy Japanese Adults—A Randomized, Double-blind, Placebo-controlled, and Parallel Group Trial— [Article in Japanese]. *J. New Rem. & Clin.* 2016; 65(3): 352-367. (UMIN000016463)
- △ Effect of Supplement Containing Krill Oil on Serum Lipids in Japanese—A Randomized, Double-blind, Placebo-controlled Study— [Article in Japanese]. *Jpn Pharmacol Ther* 2015; 43(6): 837-847. (UMIN000015141)
- △ Effect of Krill Oil Intake on Human Serum Lipids—An Open Clinical Trial— [Article in Japanese]. *Jpn Pharmacol Ther* 2015; 43(5): 679-685. (UMIN000015118)
- △ Regulation of microRNA expression in humans following ingestion of the whole food FFC® Pairogen - A preliminary, pilot study. *Clin Nutr Exp.* 2015; 2: 1-8.
- △ Effect of Ingestion of Supplements Containing Cystine and Cystein Peptide Yeast Extract on Skin of Japanese Women: a Double-blind Randomized Controlled Trial [Article in Japanese]. *J Jpn Soc Nutr Food Sci* 2015; 68(8): 157-163. (UMIN000013167)
- △ Effects of Pyrroloquinoline Quinone Disodium Salt Intake on the Serum Cholesterol Levels of Healthy Japanese Adults. *J Nutr Sci Vitaminol.* 2015;61(3):233-240.

- △ Effect of Teadenol Containing Tea on Human Obesity Improvement [Article in Japanese]. *New Food Industry* 2015 ; 57(4): 1-6
- △ Supplemental Ingestion of Collagen Peptide Improves T-cell-related Human Immune Status - Placebo-controlled Double-blind Study-. *Jpn Pharmacol Ther* 2015;43(1):51-56.
- △ Effect of Enzyme Supplement Internal Environment in Humans [Article in Japanese]. *Journal of Preventive Medicine* 2014; 9(3): 123-131.
- △ Effects of SunMedion 30000MaxH on Sleep Characteristics in People with Sleeplessness [Article in Japanese]. *Journal of Japanese Society for Integrative Medicine* 2014; 7(1): 105-113. (UMIN000014194)
- △ The Immunostimulating Effects of Amino Acid Supplement in Healthy Humans [Article in Japanese]. *New Food Industry* 2014; 56(3): 49-56.
- △ Effects of Banana Ingestion on Skin Moisture and Elasticity in Humans —A Clinical Trial with an ABA design— [Article in Japanese]. *New Food Industry* 2013; 55(10): 9-18.
- △ Effect of American Sunflower Potato (ASP, *Helianthus tuberosus*) on HbA1c in Hyperglycemia [Article in Japanese]. *J. New Rem. & Clin.* 2013; 62(12): 2318-2325.
- △ Effects of the Oral Intake of Heat-Killed *Enterococcus faecalis* EC-12® on Gut Microbiota Profiles and Reduction Body Fats in Obese Men [Article in Japanese]. *J. New Rem. & Clin.* 2013; 62(8): 1473 -1487.
- △ Effect of a Novel Supplement, Containing Both Western and Traditional Chinese Herbs, on Eyestrain [Article in Japanese]. *J. New Rem. & Clin.* 2013; 62(6): 1186-1197
- △ Effects of kiwifruit on innate and adaptive immunity and symptoms of upper respiratory tract infections. *Adv Food Nutr Res.* 2013; 68: 301-320.
- △ The Improvement Effect for Swelling of Lower Limb of Preparation of Red Vine Leaf Extract [Article in Japanese]. *Pharmacometrics* 2012; 83(1/2): 1-7.
- △ Effects of "KAN-POWER E+" Ingestion on on Liver Function [Article in Japanese]. *J. New Rem. & Clin.* 2012; 61(8): 1617-1627.
- △ Effects of "ZONE" Ingestion on Relaxation and Concentrations [Article in Japanese]. *J. New Rem. & Clin.* 2012; 61(2): 308-318.
- △ The Hair Growth-Promoting Effect of Oral Administration of the Preparation of the Silk Capsule [Article in Japanese]. *J. New Rem. & Clin.* 2012; 61(6): 1407-1414.
- △ The "Zespri(R) Gold Kiwi" Ingestion can improveImmune Strength. *Journal of Preventive Medicine.* 2012;7(1):17-23.
- △ The Effect of KanshoHo on the Low Back Pain (Lumbago) [Article in Japanese]. *Journal of Japanese Society for Integrative Medicine* 2012; 5(1): 62-67.

- △ The Effects of Bilberry Extract (Mirtoselect®) on Dry Eye and Antioxidant Potential [Article in Japanese]. *J. New Rem. & Clin.* 2011; 60(10): 2151-2161.
- △ The Immunostimulating Effect by Ingestion of an Echinacea Purpurea Preparation [Article in Japanese]. *Pharmacometrics* 2011; 80(5/6): 79-87.
- △ The Immunostimulating Effect of FFC® PAIROGEN Special Three [Article in Japanese]. *J. New Rem. & Clin.* 2011; 60(8): 1702-1711.
- △ The Effect of the Dietary Supplement Containing with Both Glucosamine and Chondroitin Sulfate on Knee Joint Pain [Article in Japanese]. *J. New Rem. & Clin.* 2011; 60(7): 1476-1482.
- △ The Verification Study of Cotton-derived "Cellobiose" Ingestion for Improving the Intestinal Microbiota [Article in Japanese]. *J. New Rem. & Clin.* 2011; 60(6): 1251-1265.
- △ The Efficacy and Safety of "SURATTO SENGEN" Ingestion on Chronic Constipation [Article in Japanese]. *J. New Rem. & Clin.* 2010; 59(8): 1475-1486.
- △ The Efficacy and Safety of Sasa veitchii Extract Ingestion in Humans with Obesity, Constipation, and Aging [Article in Japanese]. *J. New Rem. & Clin.* 2010; 59(3): 145-155.
- △ The Efficacy and Safety of "Garlic Egg Yolk (229-55)" Ingestion on Blood Pressure, LDL Cholesterol, Body Fat, and Eye Strain [Article in Japanese]. *J. New Rem. & Clin.* 2009; 58(11): 113-123.
- △ The Efficacy and Safety of "URUOI SENGEN" ingestion on the Skin Improvement [Article in Japanese]. *J. New Rem. & Clin.* 2008; 57(12): 2095-2102.
- △ Pilot Study of The Standardized Oats Herb Extract for Smoking Reduction [Article in Japanese]. *Pharmacometrics* 2008; 75(3/4): 47-53.